

WOLF CREEK BUSINESS COMMUNITY

in the City of Watford City North Dakota and being a part of Government Lot 3 in the SW 1/4 of Section 18, T.150N., R.98W., of the 5th Principal Meridian, McKenzie County North Dakota

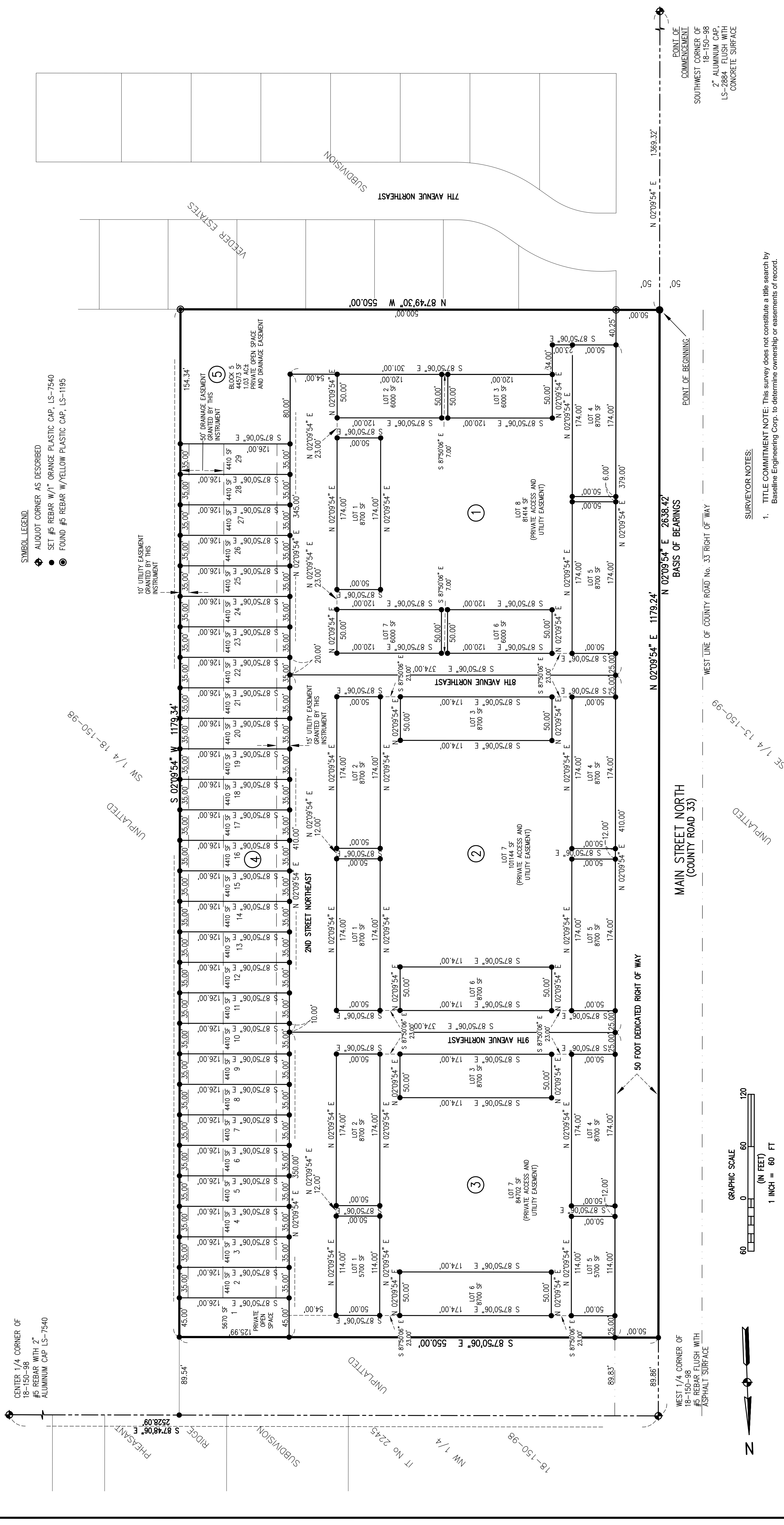
BASELINE
Engineering · Surveying · Planning

2304 11TH AVENUE W. SUITE 107 - WILMISTON, ND 58802
P: 701.609.0026 · F: 666.673.4864 · www.baselinecorp.com

DESIGNED BY	NN
DRAWN BY	JSE
CHECKED BY	AD
PREPARED BY	DATE
REVISION DESCRIPTION	

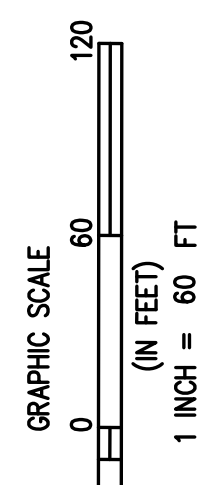
WOLF CREEK BUSINESS COMMUNITY PART OF GL 3 IN THE SW 1/4 OF 18-150-98
MCKENZIE COUNTY
WATFORD CITY
JJT3, LLC
PREPARED UNDER THE DIRECT SUPERVISION OF

FOR AND ON BEHALF OF BASELINE CORPORATION
DATE SUBMITTED 3/25/13
DRAWING SIZE 22" X 34"
SURVEY DATE 02/27/12
SCALE 2500:1
DRAWING NAME 250033A Wolf Creek Plat.dwg
SHEET 2 OF 2



- SYMBOL LEGEND**
- ALLOT CORNER AS DESCRIBED
 - SET #5 REBAR W/1" ORANGE PLASTIC CAP, LS-7540
 - FOUND #5 REBAR W/YELLOW PLASTIC CAP, LS-1195

- SURVEYOR NOTES:**
- TITLE COMMITMENT NOTE: This survey does not constitute a title search by Baseline Engineering Corp. to determine ownership or easements of record.
 - This Land Survey Plat was prepared by James S. Estes, LS-7540, for and on behalf of Baseline Corporation, 2304 11th Avenue West Suite 107, Williston, ND 58801
 - Distances on this plat are expressed in International Survey Feet and decimals thereof. An International Survey Foot is defined as exactly 0.3048 meters.
 - Basis of Bearings: Considering the west line of the SW 1/4 of Section 18, T150N, R98W, of the 5th P.M., McKenzie County North Dakota as monumented by a 2" aluminum cap, LS-2884 found flush with the concrete surface at the southwest corner of said Section 18 and a #5 rebar found at the West 1/4 corner of said Section 18 to be an assumed bearing of the North Dakota State Plane Survey Meridian of 2656-42 feet with all other bearings and distances contained herein relative to.



POINT OF BEGINNING
SOUTHWEST CORNER OF 18-150-98
2" ALUMINUM CAP, LS-2884 - FLUSH WITH CONCRETE SURFACE

POINT OF BEGINNING

WEST LINE OF COUNTY ROAD No. 33 RIGHT OF WAY

MAIN STREET NORTH (COUNTY ROAD 33)

50 FOOT DEDICATED RIGHT OF WAY

WEST 1/4 CORNER OF 18-150-98
#5 REBAR FLUSH WITH ASPHALT SURFACE